

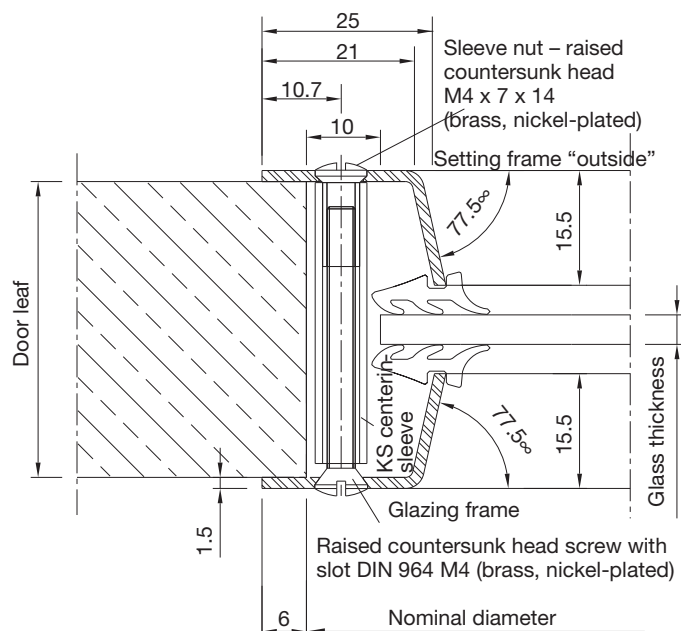
Stainless steel portholes – L

Design C – screw fitting visible on both sides

Surface: finely brushed with serrated grinder (carded web/linen, fine grain 150) and finished with abrasive web (grain size 320).

Nominal diameter:	Price €/unit					
	200 mm	250 mm	300 mm	350 mm	400 mm	500 mm
1 unit	160,-	160,-	160,-	170,-	190,-	219,-
2 units	144,-	144,-	144,-	153,-	175,-	204,-
3 units	139,-	139,-	139,-	149,-	170,-	199,-
5 units	135,-	135,-	135,-	145,-	166,-	195,-
10 units	131,-	131,-	131,-	141,-	163,-	192,-
20 units	130,-	130,-	130,-	140,-	161,-	190,-

Prices without glass, plus VAT in euro. Delivery ex works, packed.



Design C

Ordering details:

Door leaf thickness: _____ mm

Nominal diameter: _____ mm

Glass thickness: _____ mm

Units: _____

Surface: finely brushed with serrated grinder (carded web/linen, fine grain 150) and finished with abrasive web (grain size 320).

1 unit comprises:

1 setting frame, 1 glazing frame,
8 raised countersunk head screws, 8 sleeve nuts (raised countersunk head), 8 x KS centering sleeve, glazing seal